

About the Images

The images featured each month in this calendar are unique compositions created from both histology micrographs and illustrations from the Pathology Teaching Collection. Using images pertaining to the individual diagnostic program featured each month and selected for their representative elements, each monthly image was created using digital imaging techniques to combine form and color to create a unique composition.

The intent of the image compositions is to see the elements of pathology with an artistic eye and to explore the elements of abstraction within the natural world. In a visual discipline such as Anatomic Pathology, images are fundamental to the art of diagnosis and thus ubiquitous in the field. While the diagnostician's focus is rightly on the determination of disease, and hence on those features of the image that are of diagnostic import, many exquisite images are seen and passed over as medically uninteresting. Yet the aesthetic qualities of both remain, revealing within the observer's mind a world that abounds with powerful and wonderful abstract elements waiting to be explored.

All images and photography unless noted are by Katherine Henderson and Sarah Whitaker.

For additional information concerning the images please contact: photographics@yale.edu.

Contact Information

Yale Pathology Labs

Mailing Address:

Yale School of Medicine
310 Cedar Street, LH 108
New Haven, CT 06520

877-YALE LAB

Shipping Address (for specimens):

Surgical Pathology Unit, East Pavilion 2-631
Yale School of Medicine Receiving
200 South Frontage Road
New Haven, CT 06510

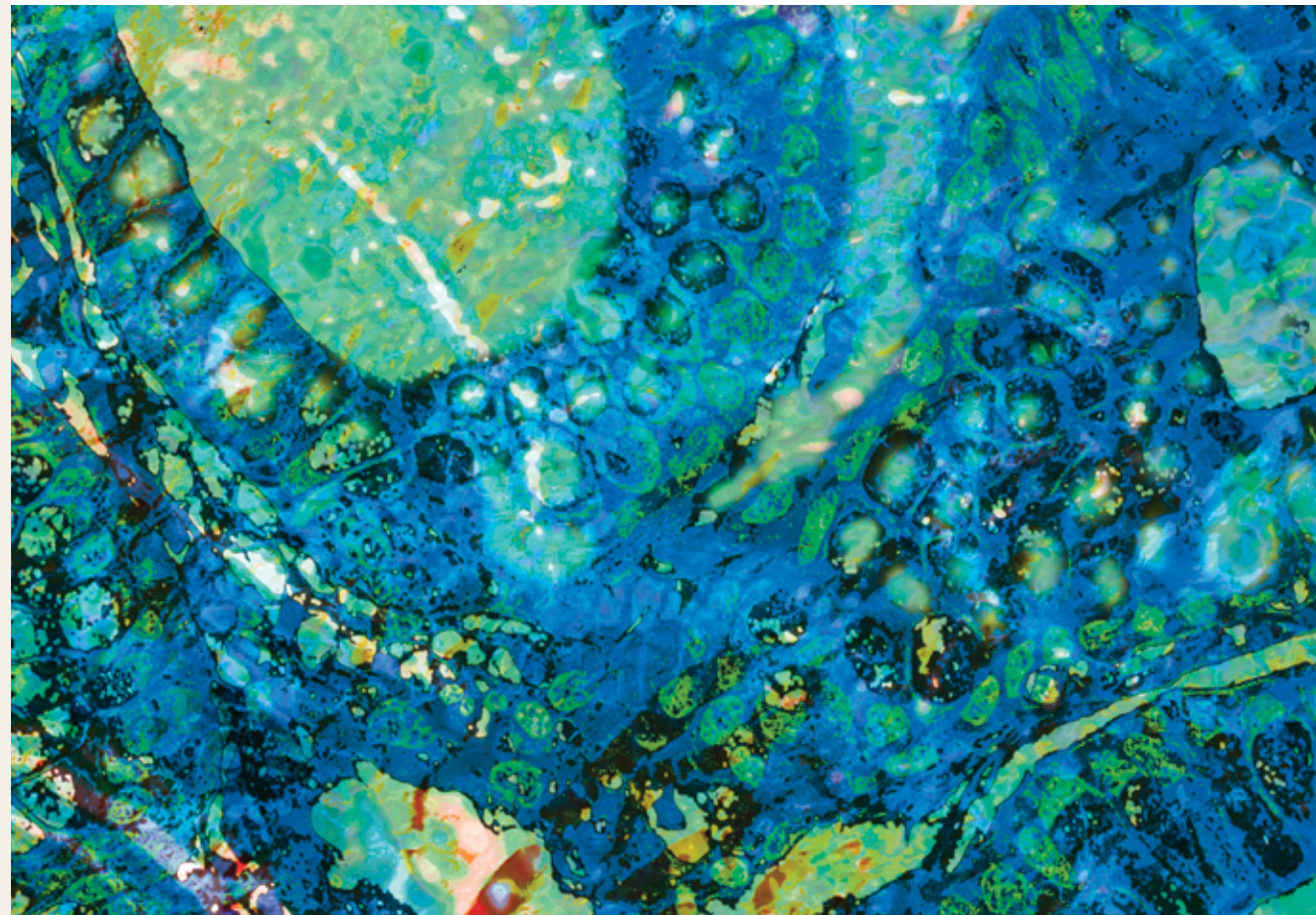
The Yale Medical Group

300 George Street, New Haven, CT 06511

Yale Physicians Referral Assistance
Patient Financial Services

877-YALE MDS

800-826-9922 toll free



877-YALE LAB
www.yalepathlabs.org

